



Full range
cover

ATLAS SP



Green energy
drive & control
system



Customised
cabins



High level
security system



Premium quality

Passenger Lifts



KLEEMANN
Your 1st Choice in Lifts



Our story & heritage

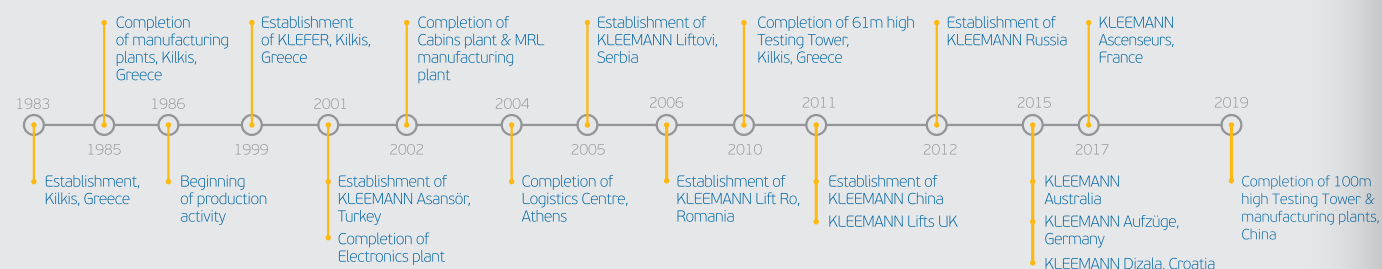
Founded in 1983 in Kilgis, Greece, KLEEMANN is one of the major lift companies in the European and global market, providing any type of residential or commercial passenger and freight lifts, escalators, moving walks, accessibility and marine solutions, parking systems and components.

Its distribution network expands to more than 100 countries.

KLEEMANN stands for innovation in design and technology, for flexibility and pragmatic thinking, for quality products and dedicated service and support.

Integrated manufacturing facilities, highly trained workforce and state-of-the-art IT systems and logistics support enable KLEEMANN to deliver reliable, highly personalised solutions, whatever the challenge.

KLEEMANN timeline



WE ARE THE GLOBAL
LIFT SUPPLIER WITH
WIDE PRODUCT RANGE



WE ARE EXPERTS
IN SPECIAL PROJECTS



WE OFFER
WORLD CLASS
DESIGN



Development in China

KLEEMANN China was
founded in Kunshan in

2011

The tower raises at

100
meters height

Premium quality according to

European
standards

Gross floor area of the building

19,300

square meters (production, logis-
tics, offices and testing tower)

Manufacturing capacity

5500

units/year

Global sourcing and worldwide
funneling under product quality
control, compliant with

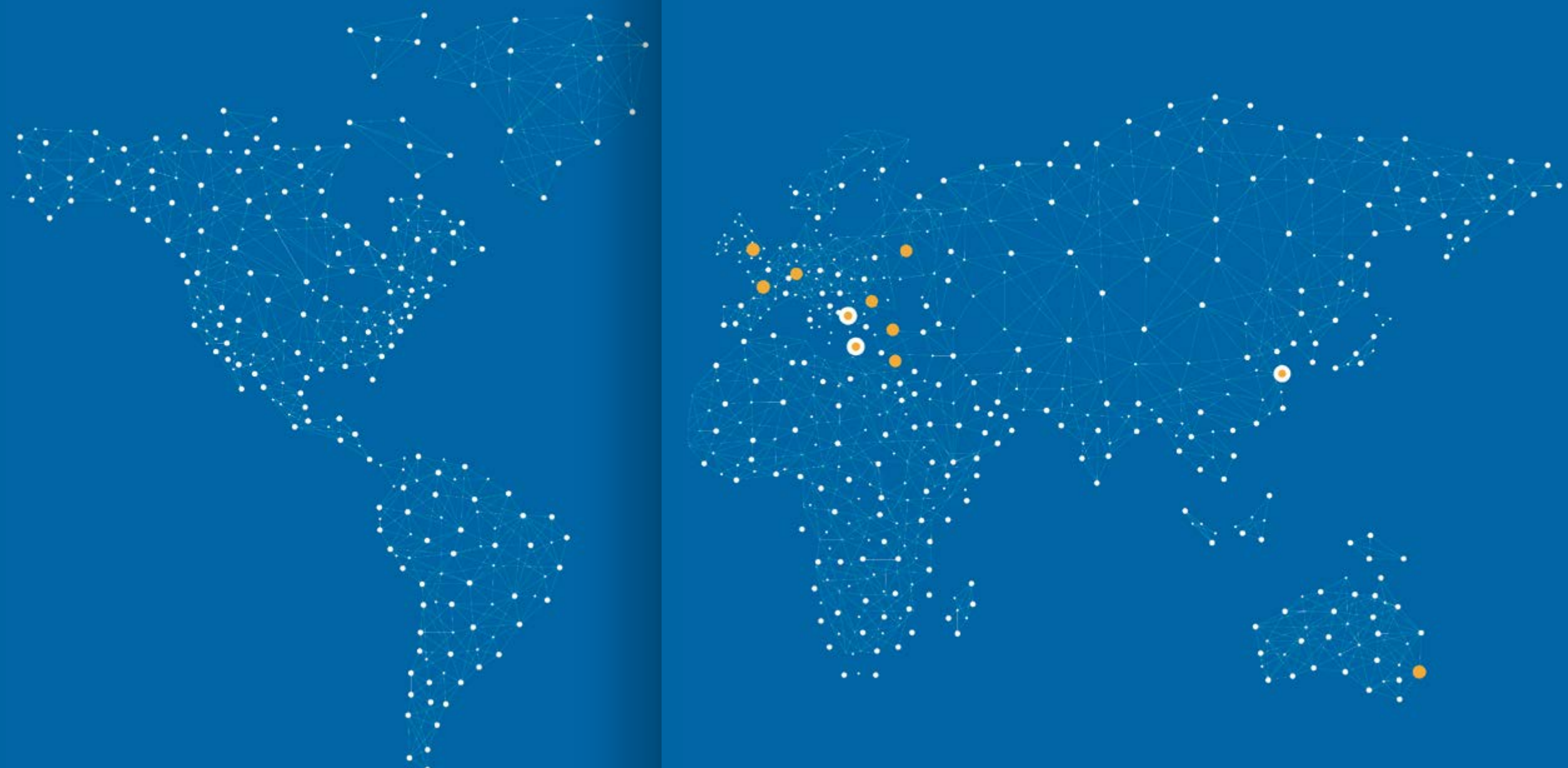
EN81.1/
EN81.20



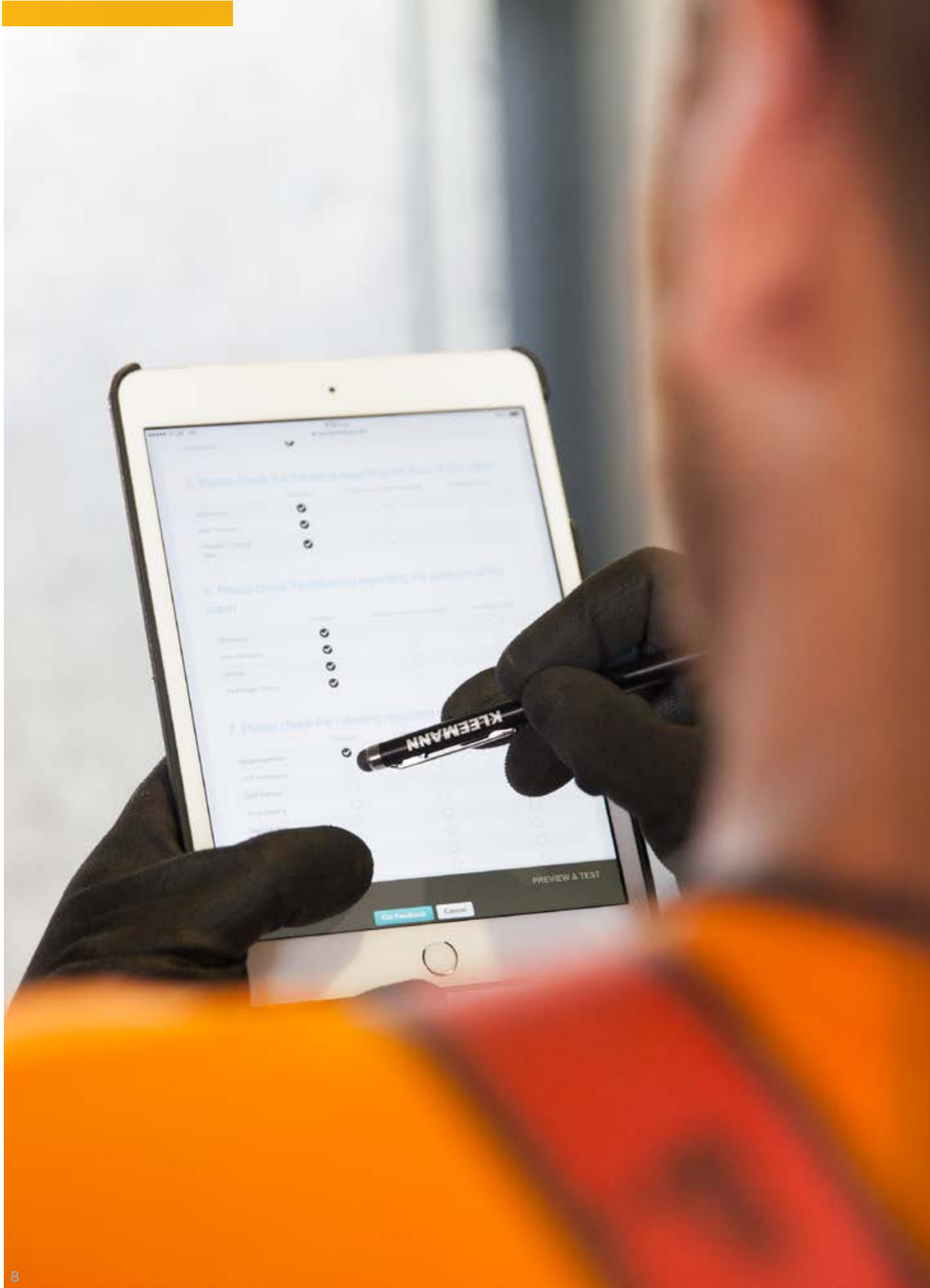
Global perspective

We expand in
more than
100
countries around
the world

KLEEMANN Group facilities
cover an area of 255.000 m²
in land and 140.000 m²
in buildings globally.



● MANUFACTURING FACILITIES ● LOCAL PRESENCE



Outstanding ride quality

Atlas is designed to deliver both premium quality and exceptional ride comfort. Low noise levels and minimal vibrations ensure a smooth and pleasant passenger experience.

Safety

Feel safe and secure with the guarantee of complete passenger safety.

Ease of installation

Designed for ease of installation and use, reliability and spatial efficiency.

Fast delivery

Place your order and enjoy prompt delivery.

24/7 Service

We support you 24/7 wherever you are.

Eco-Friendly

Regeneration systems are available to provide exceptional ride quality whilst reducing energy by up to 60%.

100% Quality Control

We control every step of the production procedure. Our unique control system safeguards the quality of our products and keeps efficiency and innovation in high levels.

Design

Unique tailor-made design options are customized according to your specific needs and the aesthetics of your space and building.





ATLAS BASIC SP

Technical Specifications



| | | |
|-------------------------|---|----------------------------------|
| Rated Load (kg) | 375-1000 | |
| Suspension | 2:1 | |
| Machine room | MRL (MR) | |
| Max rated speed (m/s) | 1.0/1.6 | |
| Min pit depth (mm) | v≤ 1.0m/s 1010 v≤ 1.6m/s 1110 | v≤ 1.0m/s 1000 v≤ 1.6m/s 1100 |
| Min clear headroom (mm) | v≤1.0m/s 3400 v≤1.6m/s 3600 | |
| Max entrances | 2(Through) | |
| Panoramic option | Yes | |
| Type of machine | KLEEMANN RN | |
| Directives & Standards | EN81-1 | EN81.20 |
| | With compensation chain addition 150mm to above min pit | |

ATLAS RL SP

Technical Specifications

| | | |
|-------------------------|-----------------------------------|----------------------------------|
| Rated Load (kg) | 400-1000 | |
| Suspension | 2:1 | |
| Machine room | MRL (MR) | |
| Max rated speed (m/s) | 1.0/1.75 | |
| Min pit depth (mm) | v≤ 1.0m/s 1150 v≤ 1.75m/s 1300 | |
| Min clear headroom (mm) | v≤1.0 m/s 3400 v≤1.75m/s 3650 | v≤1.0 m/s 3800 v≤1.75m/s 4065 |
| Max entrances | 2 (Through) | |
| Panoramic option | Yes | |
| Type of machine | KLEEMANN RN | |
| Directives & Standards | EN81-1 | EN81.20 |



ATLAS GIGAS SP

Technical Specifications



| | | |
|-------------------------|--|--|
| Rated Load (kg) | 1275 - 2500 | |
| Suspension | 2:1 | |
| Machine room | MRL (MR) | |
| Max rated speed (m/s) | 1.0/1.6/1.75 | |
| Min pit depth (mm) | v≤1.0 m/s 1100 1.0<v≤1.6 m/s 1270 1.6<v≤1.75 m/s 1315 | |
| Min clear headroom (mm) | v≤ 1.0m/s and Q≤1600 3635mm v≤ 1.0m/s and Q>1600 3750mm v≤ 1.6m/s and Q≤1600 3845mm v≤ 1.6m/s and Q>1600 3960mm v≤ 1.75m/s and Q≤1600 3905mm v≤ 1.75m/s and Q>1600 4020mm | v=1 m/s 3800 v=1.6m/s 4000 v=1.75m/s 4060 |
| Max entrances | 2 (Through) | |
| Panoramic option | Yes | |
| Type of machine | KLEEMANN RN | |
| Directives & Standards | EN81-1 | EN81.20 |
| | Cabin external height shall not exceed 2340mm Total height of the car bottom (car platform +MDF+ floor) shall not exceed 113mm. | Cabin external height shall not exceed 2340mm Total height of the car bottom (car platform +MDF+ floor) shall not exceed 100mm. |



World class design

Since 2007, KLEEMANN has launched its creative research, in cooperation with the industrial designer Andreas Zapatinas. That was the beginning of a new era. Through this rewarding partnership, new technical and aesthetic solutions were explored and developed.

Inspired by human needs, KLEEMANN focuses on shaping new space qualities that lift the passenger's mood and stimulates interaction inside the elevator.



Our cabins

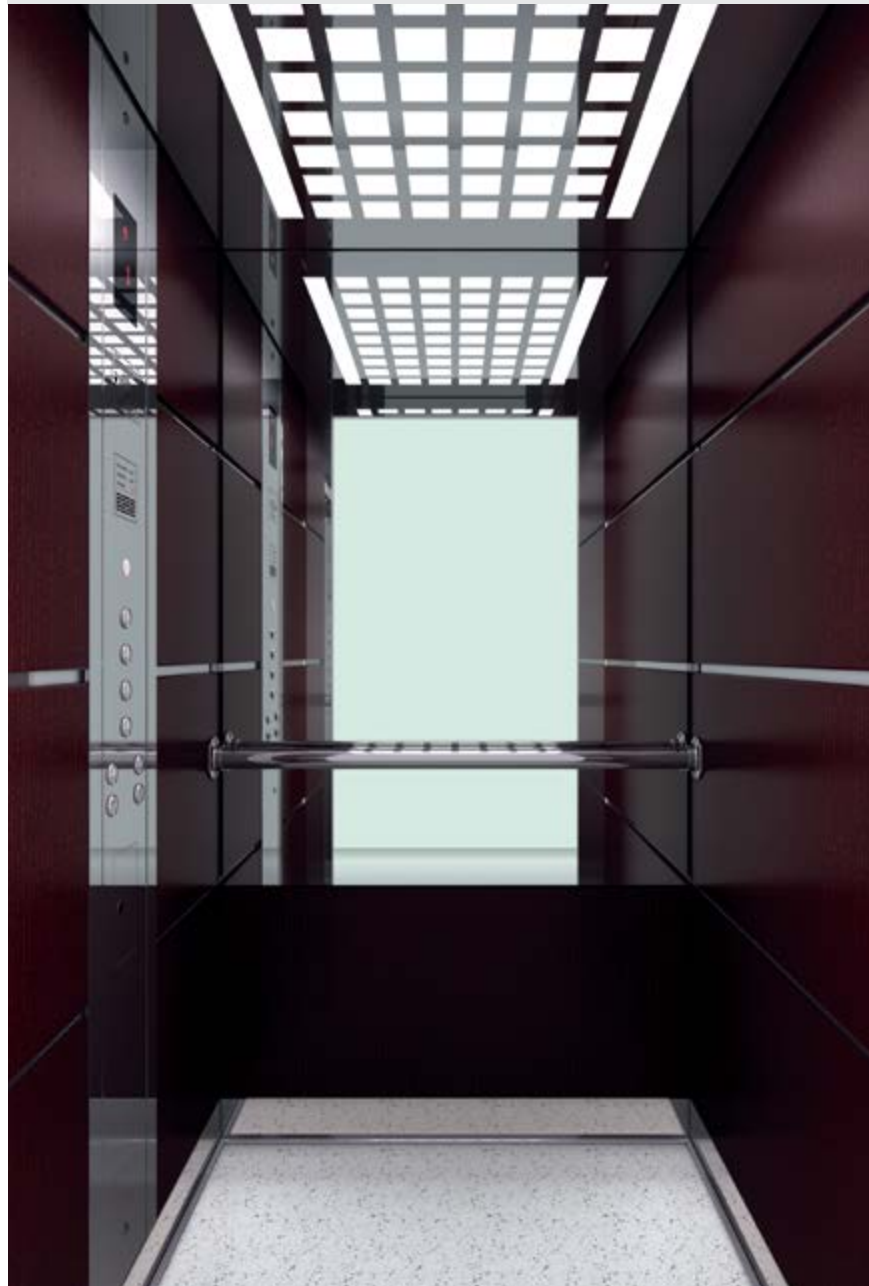
KLEEMANN Design is about life. Going far beyond the elevator design, KLEEMANN cultivates a whole design culture that elevates each and every aspect of its operation. It is a way of thinking, a mindset of innovation.

Rather than thinking of the elevator as a box, KLEEMANN Design thinks of it as a unique space in the building and transforms the whole elevator experience into a new value for the people, the building, the environment.



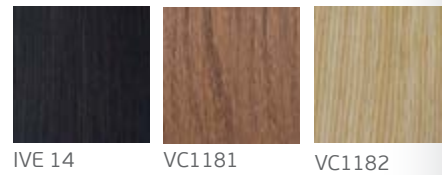
CLASSIC

A510 SP



WALL FINISHES

Wood veneers



Ceiling O14
Walls Wood veneer IVE 14
Corners-Skirtings Stainless steel mirror
Floor Artificial granite Regal white SP
Handrail K1
Mirror ¾ height / full width
Car Operating Panel KCH 1000

Colours may differ slightly from those shown in the manual owing to the limitations of the printing process.



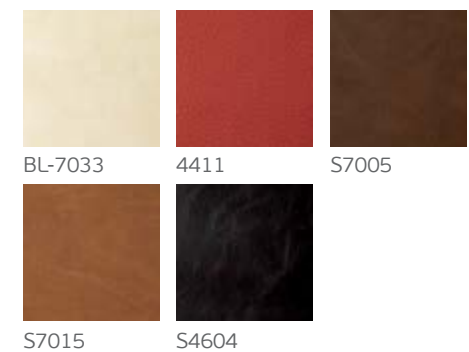
CLASSIC

A520 SP



WALL FINISHES

Artificial leather



Ceiling O3
Walls Artificial leather BL-7033
Corners-Skirtings Stainless steel mirror
Floor Rubber 2020T
Handrail K7
Mirror Full height / full width
Car Operating Panel KCH 1000

Colours may differ slightly from those shown in the manual owing to the limitations of the printing process.



CLASSIC A530 SP

WALL FINISHES Split panels



1635

Ceiling O3
Walls Split panel 1635
Corners-Skirtings Stainless steel mirror
Floor Artificial granite Regal white SP
Handrail K7
Mirror Full height / full width
Car Operating Panel KCH 1000

Colours may differ slightly from those shown in the manual owing to the limitations of the printing process.

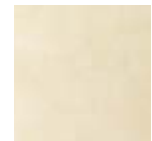


CLASSIC

A710 SP



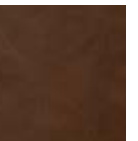
WALL FINISHES Artificial leather



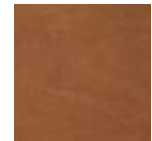
BL-7033



4411



S7005



S7015



S4604

Ceiling A710
Walls Artificial leather S7005
Corners-Skirtings SStainless steel satin
Floor Laminate 8630
Handrail K7
Mirror Full height / half width
Car Operating Panel KCH 1000

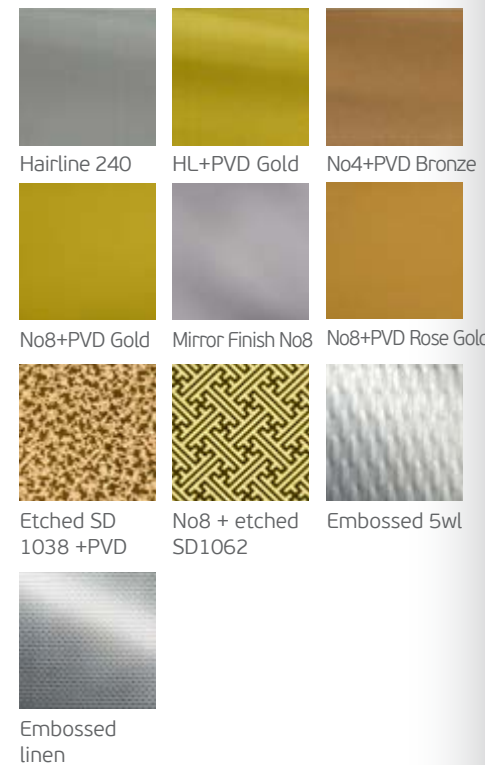
Colours may differ slightly from those shown in the manual owing to the limitations of the printing process.

Panoramic



EN81.20

WALL FINISHES Stainless steel



More options available.
Please contact your sales engineer.
Colours may differ slightly from those shown in the manual owing to the limitations of the printing process.

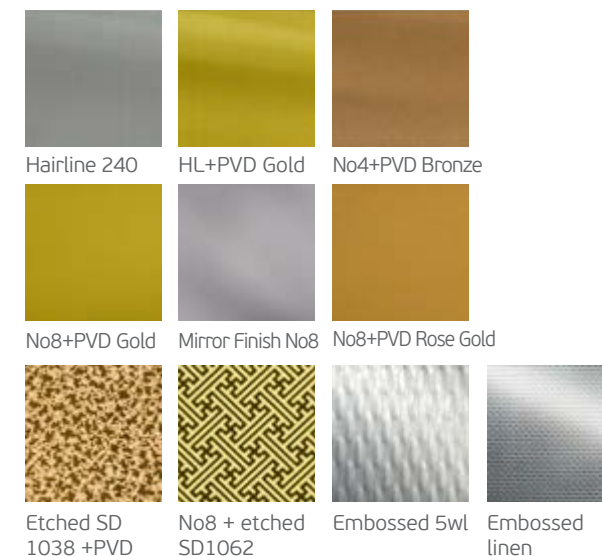


EN81.20

MODERN
LIFE

L310 SP

WALL FINISHES Stainless steel



Ceiling O10
Walls Stainless steel
hairline 240
Floor Rubber 2020T
Handrail K7
Mirror Half height / full width
Car Operating Panel KCH 1000

More options available.
Please contact your sales engineer.
Colours may differ slightly from those shown in the manual owing to the limitations of the printing process.



MODERN
LIFE

L330 SP

WALL FINISHES

Painting



德国劳尔色卡RAL

Ceiling O55
Walls RAL9010
Corners-Skirtings Stainless steel satin
Floor Rubber 2020T
Handrail K7
Mirror Full height / half width
Car Operating Panel KCH 1000

Colours may differ slightly from those shown in the manual owing to the limitations of the printing process

MODERN
LIFE

L510 SP

WALL FINISHES

Glasses



Ceiling O10
Walls B132W White glass
Corners- Skirtings Stainless steel satin
Floor Rubber 2020T
Handrail K2
Mirror Half height / full width
Car Operating Panel KCH 1000



EN81.20



EN81.20

MODERN
LIFE

L530 SP

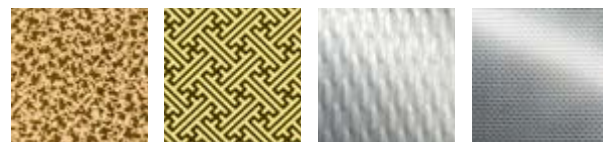
WALL FINISHES Stainless steel



Hairline 240 HL+PVD Gold No4+PVD Bronze



No8+PVD Gold Mirror Finish No8 No8+PVD Rose Gold



Etched SD 1038 +PVD No8 + etched SD1062 Embossed 5wl Embossed linen

Ceiling O14

Wall Mirror finish No8 (back)
- Stainless steel hairline 240 (sides)

Corners- Skirtings Mirror finish No8

Floor Laminate 8096

Handrail K7

Mirror Half height / full width

Car Operating Panel KCH 1000

More options available.
Please contact your sales engineer.

Colours may differ slightly from those shown in the manual owing to the limitations of the printing process.



MODERN
LIFE

L710 SP



WALL FINISHES Wood veneers



IVE 14 VC1181 VC1182

WALL FINISHES Stainless steel



Hairline 240 HL+PVD Gold No4+PVD Bronze



No8+PVD Gold Mirror Finish No8 No8+PVD Rose Gold



Etched SD 1038 +PVD No8 + etched SD1062 Embossed 5wl



Embossed linen

Ceiling O14

Walls Stainless steel hairline 240 - wood veneer VC1182

Corners- Skirtings Hairline 240

Floor REGAL RED SP

Handrail K7

Mirror Half height / full width

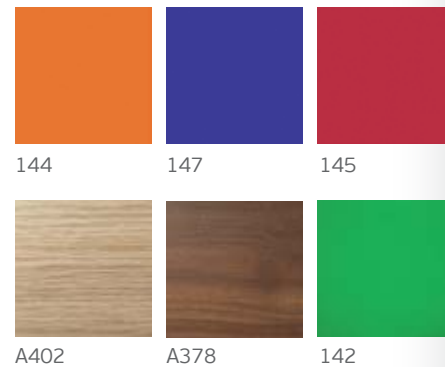
Car Operating Panel KCH 1000

FUTURE
TREND

T110 SP



WALL FINISHES Melamines



Ceiling T110
Walls Melamine A402 SP
Door posts Stainless steel satin
Floor Artificial granite Regal white SP
Handrail K1
Mirror Full height / full width
Car Operating Panel KCH 1000

Colours may differ slightly from those shown in the manual owing to the limitations of the printing process

FUTURE
TREND

T120 SP



WALL FINISHES Melamines



Ceiling T120
Walls Melamine A378 SP
Door posts Stainless steel satin
Floor Artificial granite Regal white SP
Handrail K1
Mirror Full height / full width
Car Operating Panel KCH 1000



FUTURE
TREND

T710 SP



Ceiling detail

Wall finishes Painted RAL
Ceiling T710

More options available.
Please contact your sales engineer.
Colours may differ slightly from
those shown in the manual owing to
the limitations of the printing process.



EN81.20

Ceiling detail

Wall finishes Painted RAL
Ceiling T310



More options available.
Please contact your sales engineer.



Customised design

We have a passion to design cabins that combine innovation, class and functionality. With a solution-driven creative force, our highly specialised design team goes beyond standard, creating custom solutions even for the most challenging of your projects. Offering you flexibility and the best of design solutions, we work with you at all stages providing a totally elevated customer experience.

Work with our specialised design team to create the aesthetics of your ideal cabin

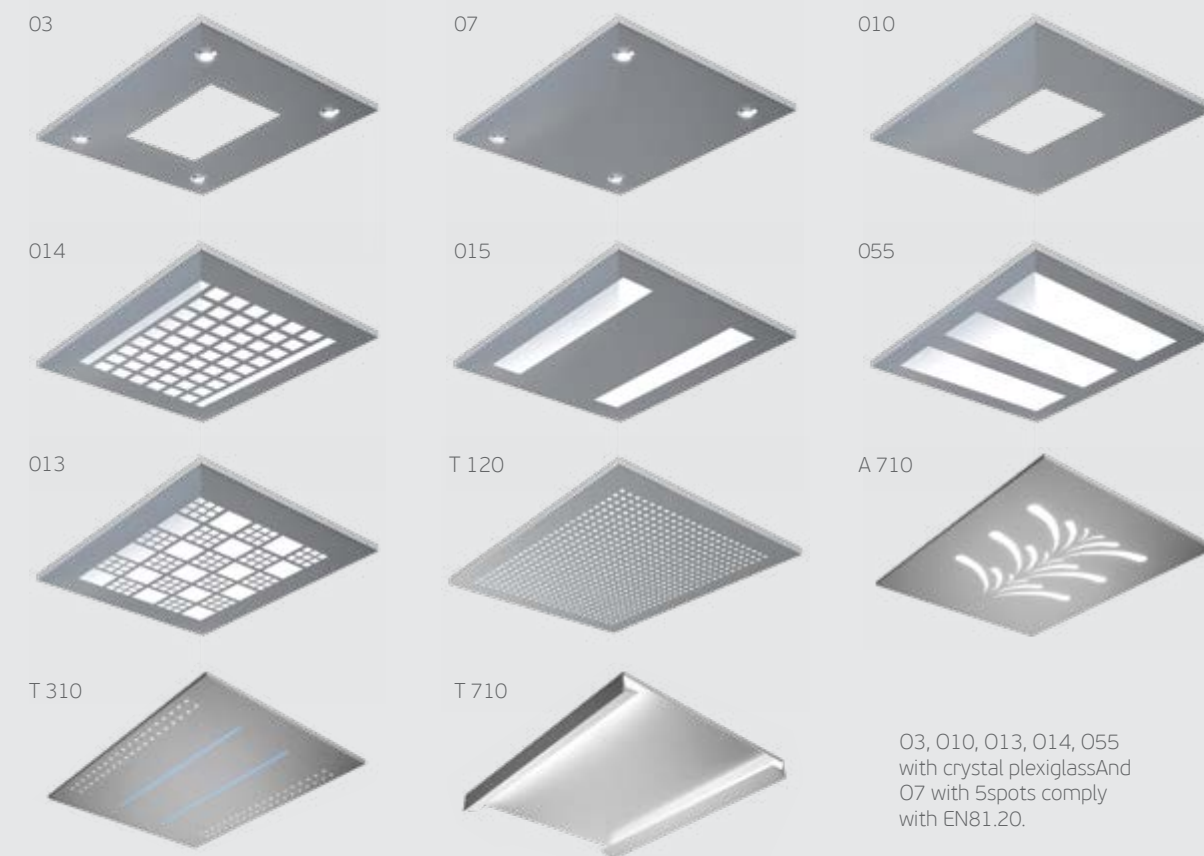




Interior Materials

Combine any colours, materials, lighting and fixtures from our ready-made design lines with numerous styles for walls, ceilings and floors.

Ceilings

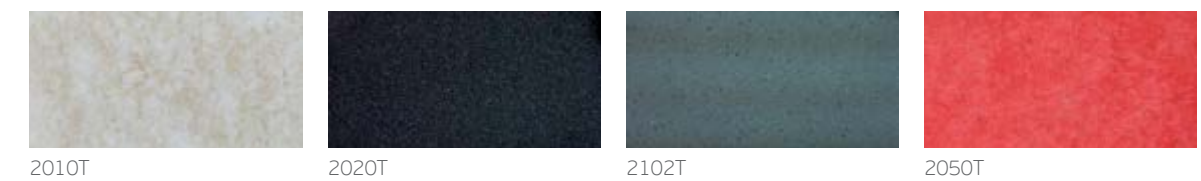


Handrails



Floors

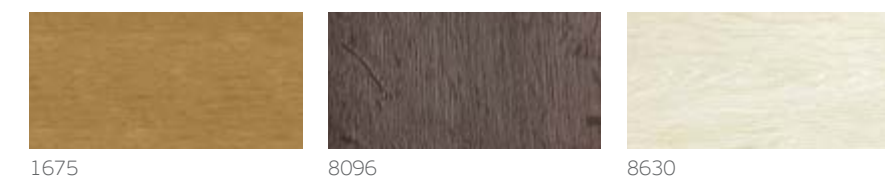
Rubber



Artificial granites



Laminates



Cabin Operating Panels

Flush mounted



KCH
full height



KCH LCD Blue Line
full height



KCH TFT Blue Line
full height



KCH C300
3/4 height

Surface mounted

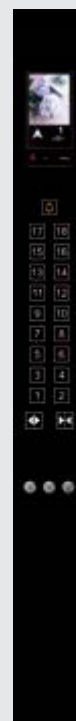


KCH SM BA SP
3/4 height



KCH 1000 SP
horizontal

Touch sensitive



KCH TSC Black
full height/
KCH TSC

Indicators

Flush mounted



LCH TFT



LCH LCD



LCH C300

Surface mounted

Landing Operating Panels

Flush mounted



LCH 102
Dot matrix



LCH 102
LCD



LCH 102
TFT



LCH C302



LCH C342

Surface mounted



LCH SM1

Touch sensitive



LCH TSL 102

Button



KLH-42R



KLH-42Q



EB960



EB218



Special Features

Magic Mirror *

The Magic Mirror is an LCD display, which is functioning as a normal display while it is activated and as a full mirror while it is deactivated.

The surface glass/mirror is constructed to be combined with the LCD display and it complies with the necessary surface, hardness and tension requirements.

***available only from Kleemann Greece**



Virtual Window

Virtual Window is one of the world's first immersive architecture & experience design elevator products. The display adapts the viewer's point of view in real time, according to the elevator's movement.

The patent pending Virtual Window software detects the movement of the elevator car - so it recognises whether it is stationary or moving, its direction, speed and location. This analysis is translated to the movement of the display's content.



Automatic Doors

Solutions for all dimensions, with wide range of options, easy to install and adjust.



Stainless Steel Satin



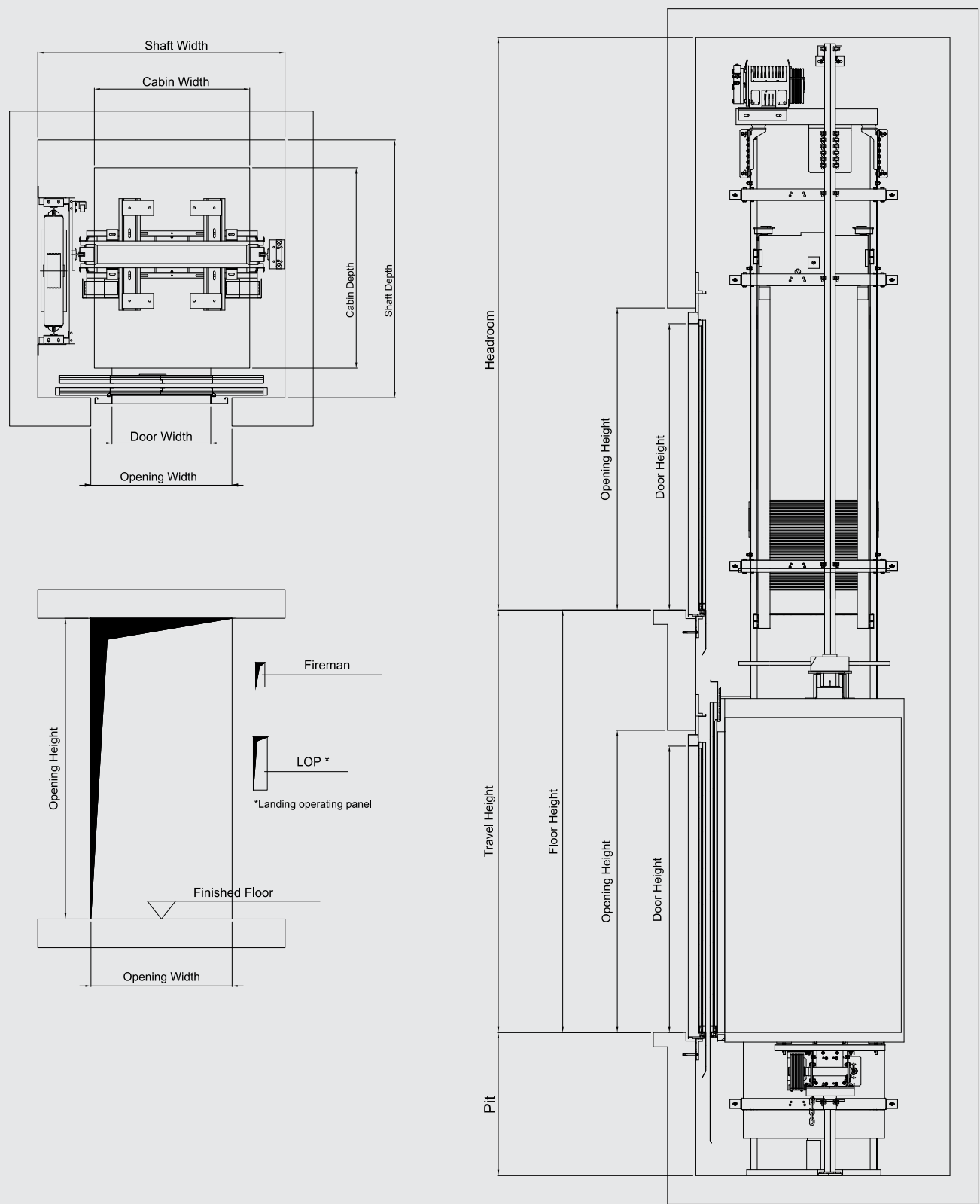
Big Vision



Full Glass



ATLAS BASIC SP



ATLAS BASIC SP

| Person/ Rated Load (kg) | Car Dimen- sions (mm) CWxCD (mm) | Door CO (mm) | Loading Door Hole (mm) | Shaft Dimen- sions (mm) SW×SD (mm) | Max Rated Speed (m/s) | Door Height (mm) | Min Pit (mm) | Clear Headroom (mm) | Machine Room Height (mm) | Max Travel (m) | Max Stops | Max number of entrances |
|----------------------------------|---|-----------------|---------------------------------|---|-----------------------------|------------------------|------------------------------|------------------------------|-----------------------------------|----------------------|--------------|-------------------------------|
| 5/375 | 900X1150 | SO:800 | 1100 | 1550*1530 | 1.6 | 2000 | 1m/s : 1000 1.6m/s : 1100 | 1m/s : 3400 1.6m/s : 3600 | 2100 | 45 | 20 | 2 |
| 5/400 | 900X1200 | CO:700 | 1000 | 1600*1500 | 1.6 | 2000 | 1m/s : 1000 1.6m/s : 1100 | 1m/s : 3400 1.6m/s : 3600 | 2100 | 45 | 20 | 2 |
| | | SO:800 | 1100 | 1550*1580 | 1.6 | 2000 | 1m/s : 1000 1.6m/s : 1100 | 1m/s : 3400 1.6m/s : 3600 | 2100 | 45 | 20 | 2 |
| 6/450 | 1000X1250 | SO:800 | 1100 | 1600*1630 | 1.6 | 2000 | 1m/s : 1000 1.6m/s : 1100 | 1m/s : 3400 1.6m/s : 3600 | 2100 | 45 | 20 | 2 |
| 8/630 | 1100X1400 | SO:800 | 1100 | 1700*1780 | 1.6 | 2000 | 1m/s : 1000 1.6m/s : 1100 | 1m/s : 3400 1.6m/s : 3600 | 2100 | 45 | 20 | 2 |
| | | SO:900 | 1200 | 1700*1780 | 1.6 | 2000 | 1m/s : 1000 1.6m/s : 1100 | 1m/s : 3400 1.6m/s : 3600 | 2100 | 45 | 20 | 2 |
| 10/800 | 1350X1400 | SO:900 | 1200 | 1950*1780 | 1.6 | 2000 | 1m/s : 1030 1.6m/s : 1130 | 1m/s : 3400 1.6m/s : 3600 | 2100 | 45 | 20 | 2 |
| 13/1000 | 1400X1600 | SO:1000 | 1300 | 2000*1980 | 1.6 | 2000 | 1m/s : 1030 1.6m/s : 1130 | 1m/s : 3400 1.6m/s : 3600 | 2100 | 45 | 20 | 2 |
| | 1100X2100 | SO:1000 | 1300 | 1850*2480 | 1.6 | 2000 | 1m/s : 1030 1.6m/s : 1130 | 1m/s : 3400 1.6m/s : 3600 | 2100 | 45 | 20 | 2 |
| | | SO:900 | 1200 | 1650*2480 | 1.6 | 2000 | 1m/s : 1030 1.6m/s : 1130 | 1m/s : 3400 1.6m/s : 3600 | 2100 | 45 | 20 | 2 |
| | 2100X1100 | CO:1200 | 1500 | 2700*1400 | 1.6 | 2000 | 1m/s : 1030 1.6m/s : 1130 | 1m/s : 3400 1.6m/s : 3600 | 2100 | 45 | 20 | 2 |
| | | CO:1000 | 1300 | 2700*1400 | 1.6 | 2000 | 1m/s : 1030 1.6m/s : 1130 | 1m/s : 3400 1.6m/s : 3600 | 2100 | 45 | 20 | 2 |
| | | | | | | | | | | | | |

For Min pit : 1.The load 375 < Q≤630kg, and the total height of the car bottom (car platform +MDF+ floor) shall not exceed 54mm.
2. The load 630 < Q≤1000kg, the total height of the car bottom (car platform +MDF+ floor) shall not exceed 92mm.
3. If there is a compensation chain Min pit+150mm
4. Speed governor KLEEMANN KLT-R (25kg) for EN81.20

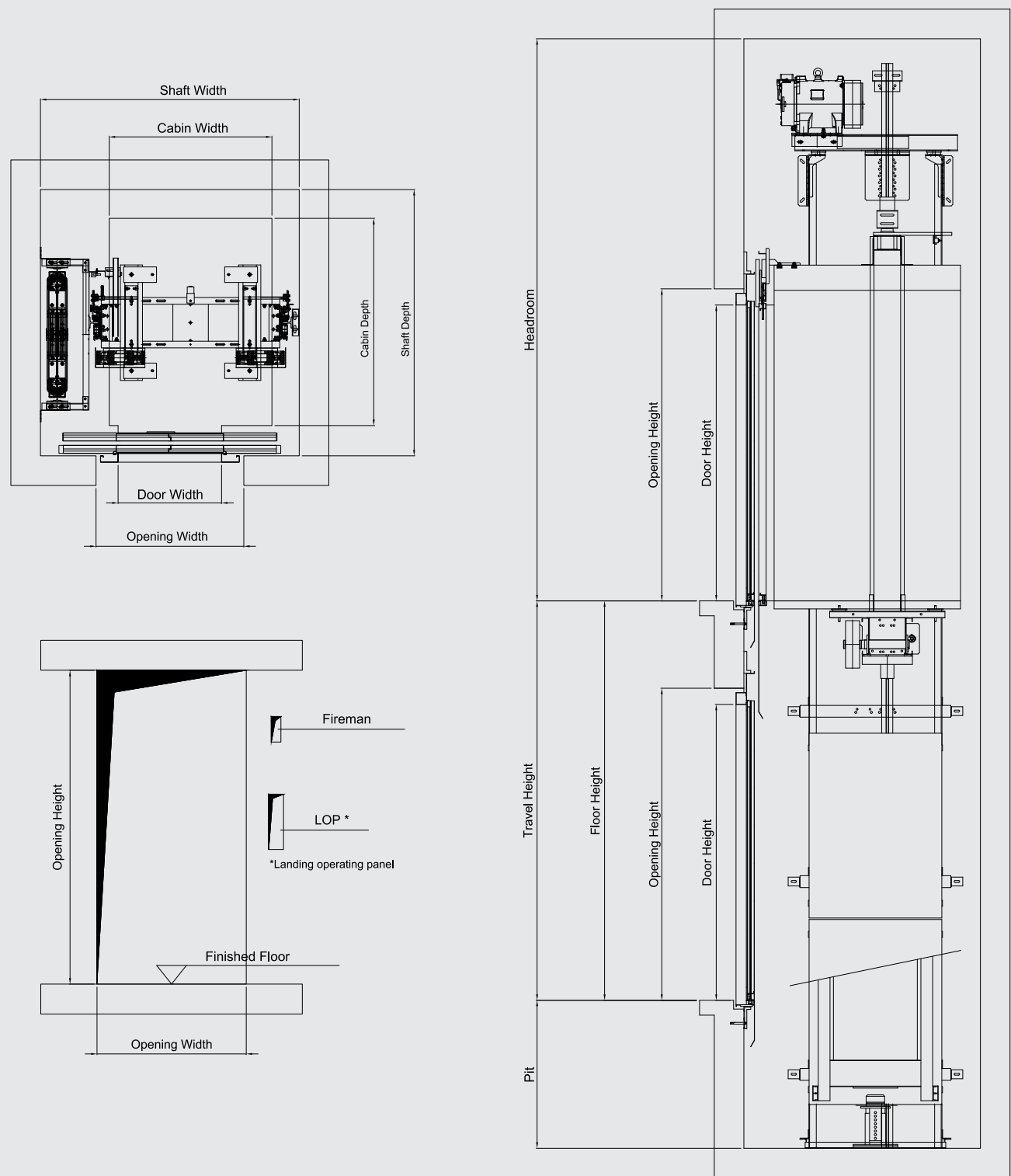
For Min clear headroom: 1. Load 375 < Q≤630kg, car internal height 2100mm, external height 2300mm, and the total height of the car bottom (car platform +MDF+ floor) shall not exceed 54mm.
2. Load 630 < Q≤1000kg, car internal height 2100mm high, external height 2340mm, the total height of the car bottom (car platform +MDF+ floor) shall not exceed 92mm.
3. Choose 700mm height baluster

Door: 1. CO= 2 Panel central open
2. SO= 2 Panel side open

Contact Kleemann Technology for more than the Max travel.
The above technical parameters are based on EN81.20



ATLAS RL SP



ATLAS RL SP

| Person/ Rated Load (kg) | Car Dimen- sions (mm) CWxCD (mm) | Door CO (mm) (mm) | Loading Door Hole (mm) | Shaft Dimen- sions (mm) SW×SD (mm) | Max Rated Speed (m/s) | Door Height (mm) | Min Pi (mm) | Clear Headroom (mm) | Machine Room Height (mm) | Max Travel (m) | Max Stops | Max number of entrances |
|----------------------------------|---|-------------------------|---------------------------------|---|-----------------------------|------------------------|------------------------------|-------------------------------|-----------------------------------|----------------------|--------------|-------------------------------|
| 5/400 | 900x1200 | CO:700 | 1000 | 1585X1500 | 1.75 | 2000 | 1m/s : 1150 1.75m/ : 1300 | 1m/s : 3800 1.75m/s : 4065 | 2100 | 80 | 30 | 2 |
| | | SO:800 | 1100 | 1565X1580 | 1.75 | 2000 | 1m/s : 1150 1.75m/ : 1300 | 1m/s : 3800 1.75m/s : 4065 | 2100 | 80 | 30 | 2 |
| 6/450 | 1000x1250 | SO:800 | 1100 | 1670X1630 | 1.75 | 2000 | 1m/s : 1150 1.75m/ : 1300 | 1m/s : 3800 1.75m/s : 4065 | 2100 | 80 | 30 | 2 |
| 8/630 | 1100x1400 | SO:800 | 1100 | 1750X1780 | 1.75 | 2000 | 1m/s : 1150 1.75m/ : 1300 | 1m/s : 3800 1.75m/s : 4065 | 2100 | 80 | 30 | 2 |
| | | SO:900 | 1200 | 1750X1780 | 1.75 | 2000 | 1m/s : 1150 1.75m/ : 1300 | 1m/s : 3800 1.75m/s : 4065 | 2100 | 80 | 30 | 2 |
| 10/800 | 1350x1400 | SO:900 | 1200 | 2000X1780 | 1.75 | 2000 | 1m/s : 1150 1.75m/ : 1300 | 1m/s : 3800 1.75m/s : 4065 | 2100 | 80 | 30 | 2 |
| 13/1000 | 1400x1600 | SO:1000 | 1300 | 2050X1980 | 1.75 | 2000 | 1m/s : 1150 1.75m/ : 1300 | 1m/s : 3800 1.75m/s : 4065 | 2100 | 80 | 30 | 2 |
| | 1100x2100 | SO:1000 | 1300 | 1900x2480 | 1.75 | 2000 | 1m/s : 1150 1.75m/ : 1300 | 1m/s : 3800 1.75m/s : 4065 | 2100 | 80 | 30 | 2 |
| | | SO:900 | 1200 | 1700x2480 | 1.75 | 2000 | 1m/s : 1150 1.75m/ : 1300 | 1m/s : 3800 1.75m/s : 4065 | 2100 | 80 | 30 | 2 |
| | 2100x1100 | CO:1000 | 1300 | 2765x1405 | 1.75 | 2000 | 1m/s : 1150 1.75m/ : 1300 | 1m/s : 3800 1.75m/s : 4065 | 2100 | 80 | 30 | 2 |

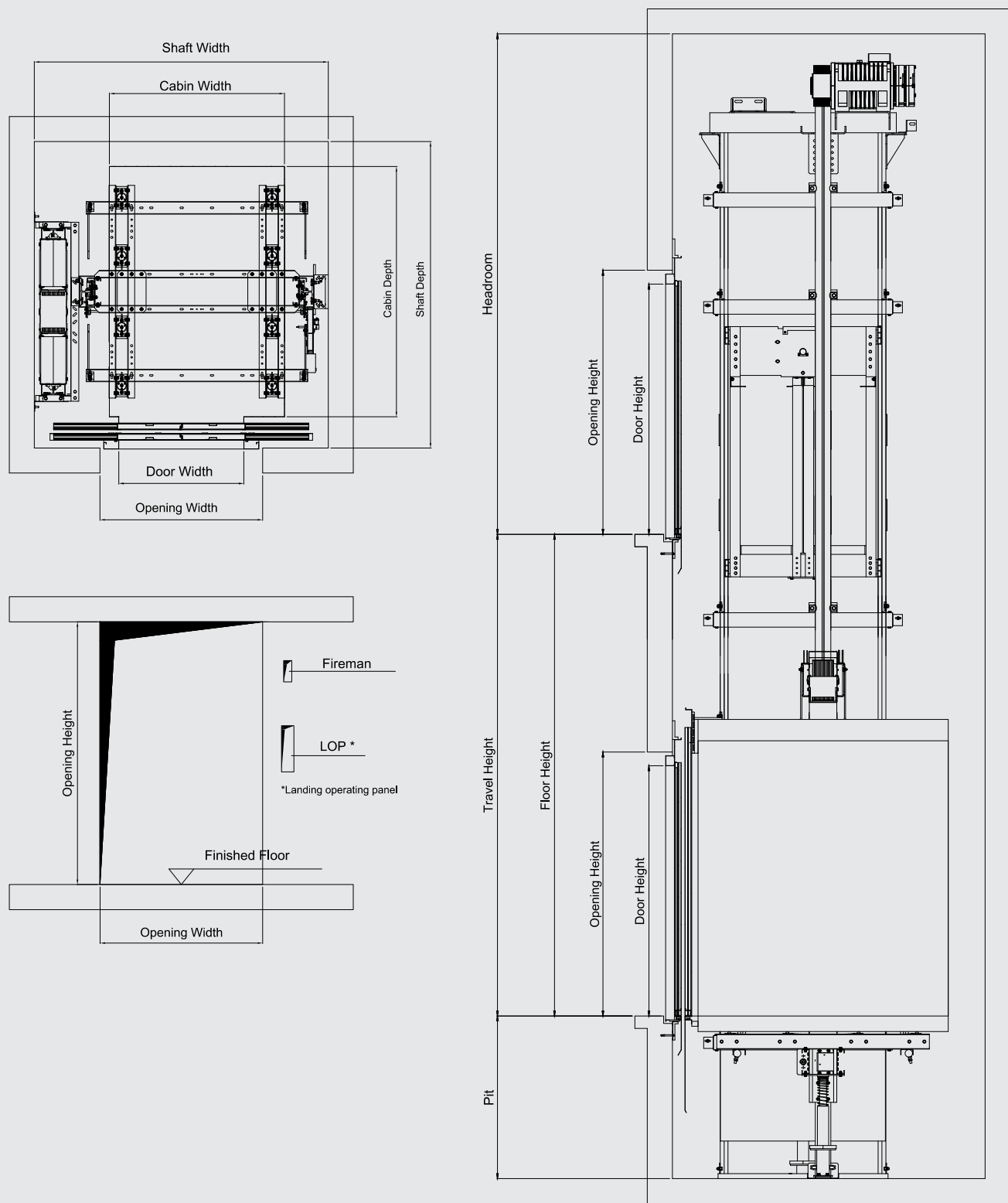
For Min clear headroom: 1. Load $400 < Q \leq 630$ kg, car internal height 2100mm, external height 2300mm, and the total height of the car bottom (car platform +MDF+ floor) shall not exceed 54mm.
2. Load $630 < Q \leq 1000$ kg, car internal height 2100mm high, external height 2340mm, and the total height of the car bottom (car platform +MDF+ floor) shall not exceed 92mm.
3. Choose 1100mm height baluster

Door: 1. CO= 2 Panel central open
2. SO= 2 Panel side open

Contact Kleemann Technology for more than the Max travel.
The above technical parameters are based on EN81.20



ATLAS GIGAS SP



ATLAS GIGAS SP

| Person/ Rated Load (kg) | Car Dimen- sions (mm) CWxCD (mm) | Door CO (mm) | Loading Door Hole (mm) | Shaft Dimen- sions (mm) SW×SD (mm) | Max Rated Speed (m/s) | Door Height (mm) | Min Pit (mm) | Clear Headroom (mm) | Machine Room Height (mm) | Max Travel (m) | Max Stops | Max number of entrances |
|----------------------------------|---|-----------------|---------------------------------|---|-----------------------------|------------------------|---|--|-----------------------------------|----------------------|--------------|-------------------------------|
| 17/1275 | 1200*2300 | SO:1000 | 1300 | 1900*2675 | 1.75 | 2000 | v ≤ 1 m/s : 1100 1 m/s < v ≤ 1.6 m/s : 1270 1.6 m/s < v ≤ 1.75 m/s : 1315 | 1m/s : 3800 1.6m/s : 4000 1.75m/s : 4060 | 2100 | 45 | 30 | 2 |
| | | CO:850 | 1150 | 1900*2605 | 1.75 | 2000 | | | 2100 | 45 | 30 | 2 |
| 21/1600 | 1400*2400 | SO:1200 | 1500 | 2100*2775 | 1.75 | 2000 | | | 2100 | 45 | 30 | 2 |
| | | CO:950 | 1250 | 2100*2705 | 1.75 | 2000 | | | 2100 | 45 | 30 | 2 |
| 24/1800 | 1500*2500 | SO:1200 | 1500 | 2200*2875 | 1.75 | 2000 | | | 2100 | 45 | 30 | 2 |
| | | CO:1000 | 1300 | 2200*2805 | 1.75 | 2000 | | | 2100 | 45 | 30 | 2 |
| 27/2000 | 1500*2700 | SO:1200 | 1500 | 2200*3075 | 1.75 | 2000 | | | 2100 | 35 | 30 | 2 |
| | | CO:1000 | 1300 | 2200*3005 | 1.75 | 2000 | | | 2100 | 35 | 30 | 2 |
| 33/2500 | 1800*2700 | SO:1400 | 1700 | 2500*3075 | 1.75 | 2000 | | | 2100 | 20 | 30 | 2 |
| | | CO:1150 | 1450 | 2500*3005 | 1.75 | 2000 | | | 2100 | 20 | 30 | 2 |

For Min pit : 1. The total height of the car bottom (car platform +MDF+ floor) shall not exceed 113mm

For Min clear headroom: 1. The external height of the car is 2340mm, and the total height of the bottom (car platform +MDF+ floor) is 100mm
2. Choose 1100mm height baluster
3. 1M /s: overtravel 50mm, 1.6 or 1.75m/s: overtravel 95mm
4. Use sliding shoes

Door: 1. CO= 2 Panel central open
2. SO= 2 Panel side open

Contact Kleemann Technology for more than the Max travel.
The above technical parameters are based on EN81.20



MRL Elevator Operation Function

| No | Name | Remark | No | Name | Remark | No | Name | Remark |
|----------|--|-----------------------|----------|--|--------|----------|---|--------|
| Standard | | | Standard | | | Standard | | |
| 1 | Fully Selective Control | | 21 | Service Landing Setting at Will | | 41 | Underspeed protection | |
| 2 | Inspection Travel | | 22 | Indicating Symbols Setting for Landing Display | | 42 | Leveling switch fault protection | |
| 3 | Self-rescue Travel | | 23 | Attendant Service | | 43 | CAN communication fault protection | |
| 4 | Testing Travel | | 24 | Independent Travel | | 44 | Safety shoe protection | |
| 5 | Clock Control | | 25 | Display | | 45 | Band-type brake switch contact detection protection | |
| 6 | Automatic Control for Door-opening Time | | 26 | emergency return running for fire disaster | | 46 | failure diagnosis of hoist way self-study | |
| 7 | Open the Door from This Landing Call | | 27 | Automatic Correction in Landing Position Signals | | 47 | motor thermal protection | |
| 8 | Pre-close the door by Door-closing Button | | 28 | Elevator Lock-out | | 48 | Door lock fault protection | |
| 9 | Open the Door by Door-opening Button | | 29 | Protection against Door-opening outside Door Zones | | 49 | Door lock disconnection protection | |
| 10 | Door selection | | 30 | Light Gate Protection for Doors | | 50 | Parallel connection running | |
| 11 | Leveling in Changing Destination Landing | | 31 | Over-load Protection | | 51 | leveling fine-tuning | |
| 12 | Cancel a Wrong Registration | | 32 | Anti- nuisance at Light-load | | 52 | door nudging with buzzer | |
| 13 | Clear Registrations at Changing Direction | | 33 | Reversing Protection | | 53 | door-opening and standby function at base station | |
| 14 | Direct Landing | | 34 | Running time governor | | 54 | floor blocking within time slot function | |
| 15 | By-passing Landing Calls on Full-load | | 35 | fault protection for deceleration switch | | 55 | external call board search function | |
| 16 | Power-off for Car Lighting and Fan at Stand-by | | 36 | protection against terminal over travel | | 56 | CAN communication interference evaluations | |
| 17 | Auto homing | | 37 | Contact Detecting in Safety Relays and Contactors | | 57 | evaluation about encoder interference | |
| 18 | Re-close door | | 38 | Protection against safety circuit fault | | 58 | car adjustment | |
| 19 | Historical Error Log | | 39 | Master CPU Protection by WDT | | | | |
| 20 | Self-tuning of Shaft Information | | 40 | Overspeed protection | | | | |
| Optional | | | Optional | | | Optional | | |
| 1 | pre door-opening | Install SM-11-A board | 9 | earthquake response function | | 17 | Voice Landing Forecasting | |
| 2 | door-opening and releveled | Install SM-11-A board | 10 | arrival gong on car | | 18 | Load compensation | |
| 3 | Fireman Service Operation | | 11 | arrival lamp on landing | | 19 | door-opening holding button | |
| 4 | The Second Car Panel | | 12 | Arrival gong on landing | | 20 | service stop output function | |
| 5 | Car Panel by the Rear Door | | 13 | Separate Control of Car Doors | | 21 | IC card floor service control in car | |
| 6 | Car Panel for the Handicapped | | 14 | VIP Priority Service | | 22 | IC card car call service control at hall | |
| 7 | group control | Install SM-GC board | 15 | Emergency Levelling at Power-off | | 23 | Shandong firefighting function | |
| 8 | community monitoring | | 16 | switch for controlling service floor change-over | | | | |

MR Elevator Operation Function

| No | Name | Remark | No | Name | Remark | No | Name | Remark |
|----------|--|-----------------------|----------|--|--------|----------|---|--------|
| Standard | | | Standard | | | Standard | | |
| 1 | Record and Dowload Errors | | 24 | Self-tuning of Shaft Information | | 47 | CAN communication fault protection | |
| 2 | Base Pole Lock | | 25 | Service Landing Setting at Will | | 48 | Safety shoe protection | |
| 3 | Balance Factor Monitoring and Evaluation | | 26 | Indicating Symbols Setting for Landing Display | | 49 | Band-type brake switch contact detection protection | |
| 4 | Motor over-heat protection | | 27 | Attendant Service | | 50 | failure diagnosis of hoist way self-study | |
| 5 | Fully Selective Control | | 28 | Independent Travel | | 51 | motor thermal protection | |
| 6 | Inspection Running | | 29 | Display | | 52 | Door lock fault protection | |
| 7 | Self-rescue Running | | 30 | emergency return running for fire disaster | | 53 | Door lock disconnection protection | |
| 8 | Testing Running | | 31 | Automatic Correction in Landing Position Signals | | 54 | Parallel connection running | |
| 9 | Clock Control | | 32 | Elevator Lock-out | | 55 | leveling fine-tuning | |
| 10 | Automatic Control for Door-opening Time | | 33 | "Protection against Door-opening outside Door Zones" | | 56 | door nudging with buzzer | |
| 11 | Open the Door from This Landing Call | | 34 | Light Gate Protection for Doors | | 57 | "door-opening and standby function at base station" | |
| 12 | Pre-close the door by Door-closing Button | | 35 | Over-load Protection | | 58 | "floor blocking within time slot function" | |
| 13 | Open the Door by Door-opening Button | | 36 | Anti- nuisance at Light-load | | 59 | "external call board search function" | |
| 14 | Door selection | | 37 | Reversing Protection | | 60 | "CAN communication interference evaluations" | |
| 15 | Leveling in Changing Destination Landing | | 38 | Running time governor | | 61 | "evaluation about encoder interference" | |
| 16 | Cancel a Wrong Registration | | 39 | fault protection for deceleration switch | | 62 | car adjustment | |
| 17 | Clear Registrations at Changing Direction | | 40 | protection against terminal over travel | | 63 | Intelligent Commissioning | |
| 18 | Direct Landing | | 41 | Contact Detecting in Safety Relays and Contactors | | 64 | Anti-sliding protection | |
| 19 | By-passing Landing Calls on Full-load | | 42 | Protection against safety circuit fault | | 65 | Unintentional Car Movement Protection | |
| 20 | Power-off for Car Lighting and Fan at Stand-by | | 43 | Master CPU Protection by WDT | | 66 | Door Bypass Function | |
| 21 | Auto homing | | 44 | Overspeed protection | | 67 | Door Circuit Detection | |
| 22 | Re-close door | | 45 | Underspeed protection | | | | |
| 23 | Historical Error Log | | 46 | Leveling switch fault protection | | | | |
| Optional | | | Optional | | | Optional | | |
| 1 | pre door-opening | Install SM-11-A board | 9 | community monitoring | | 17 | switch for controlling service floor change-over | |
| 2 | door-opening and releveled | Install SM-11-A board | 10 | earthquake response function | | 18 | Voice Landing Forecasting | |
| 3 | Fireman Service Operation | | 11 | arrival gong on car | | 19 | Load compensation | |
| 4 | The Second Car Panel | | 12 | arrival lamp on landing | | 20 | door-opening holding button | |
| 5 | Car Panel by the Rear Door | | 13 | Arrival gong on landing | | 21 | service stop output function | |
| 6 | Car Panel for the Handicapped | | 14 | Separate Control of Car Doors | | 22 | IC card floor service control in car | |
| 7 | group control | Install SM-GC board | 15 | VIP Priority Service | | 23 | IC card car call service control at hall | |
| 8 | Internet of Thing Monitoring | Install IoT Hardware | 16 | Emergency Levelling at Power-off | | 24 | Shandong firefighting function | |



Projects around the world

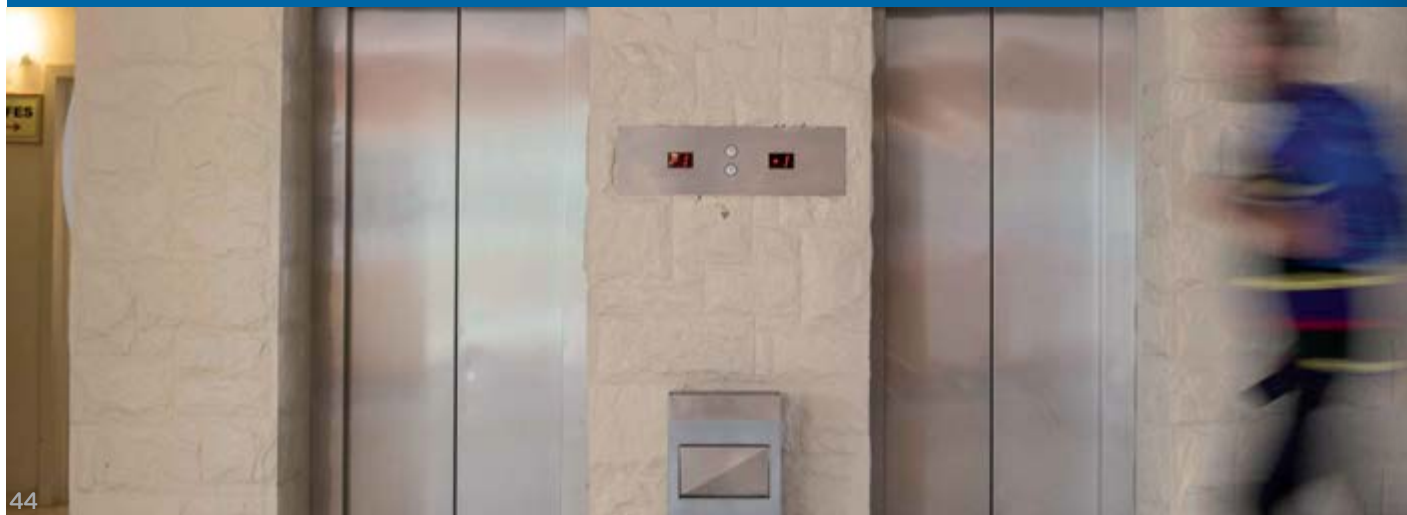
Being a reliable and innovative brand, renowned for specialising in unique and customised solutions, KLEEMANN is proud of its projects all around the world.

Through the years, KLEEMANN has developed a wide global network of customers and has fairly gained the position as a most valued lift manufacturer worldwide. KLEEMANN owns manufacturing facilities in Greece, Serbia and China and a wide network of companies around the world.

Thanks to the credibility, special innovative design and flexible and prompt service, as well as the importance to continuous development, KLEEMANN has earned the preference of the market.

For the people in KLEEMANN each project is a chance to go beyond conventional engineering and design!

KLEEMANN customers are unique and so are their projects!



Mary Rose Museum SPECIFICATIONS

| | |
|-----------------|--------------------|
| Country | United Kingdom |
| Location | Brighton |
| Type of product | Traction MRL lifts |



Big Fashion Mall

SPECIFICATIONS

| | |
|-----------------|---------------------------------------|
| Country | Serbia |
| Location | Belgrade |
| Type of product | Atlas Gigas, Moving Walks, Escalators |



Ferrari & Maserati exhibition centre

SPECIFICATIONS

| | |
|-----------------|-----------------|
| Country | Australia |
| Location | Sydney |
| Type of product | Atlas MRL lifts |



Khartoum Corporate Centre

SPECIFICATIONS

| | |
|-----------------|----------------|
| Country | Australia |
| Location | Macquarie Park |
| Type of product | Atlas Gigas |



Keflavik airport

SPECIFICATIONS

| | |
|-----------------|-------------------------|
| Country | Iceland |
| Location | Keflavik |
| Type of product | Atlas Gigas, Escalators |

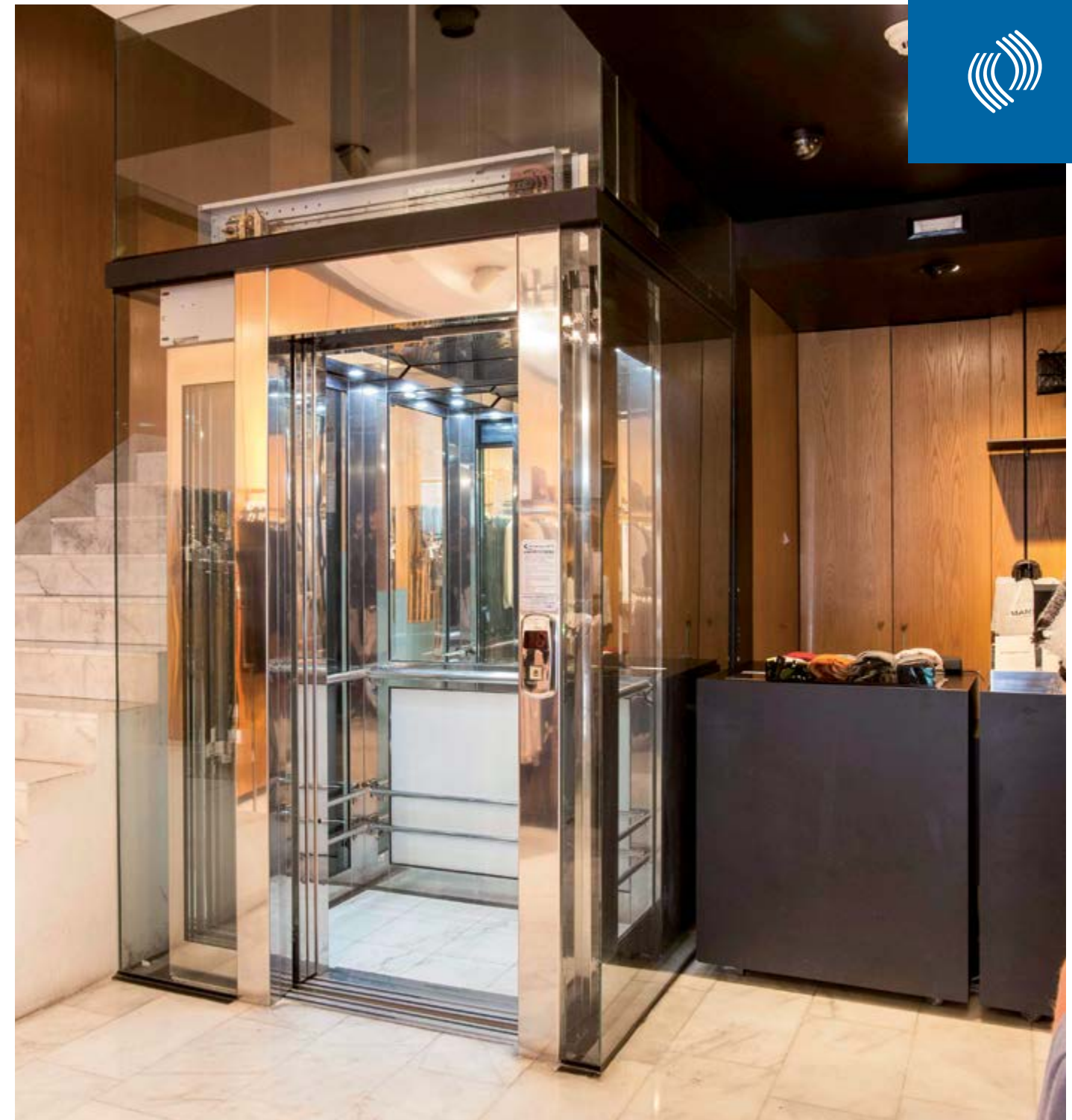




Museum of Contemporary Arts

SPECIFICATIONS

| | |
|-----------------|-----------|
| Country | Serbia |
| Location | Belgrade |
| Type of product | HADI lift |



Mango store

SPECIFICATIONS

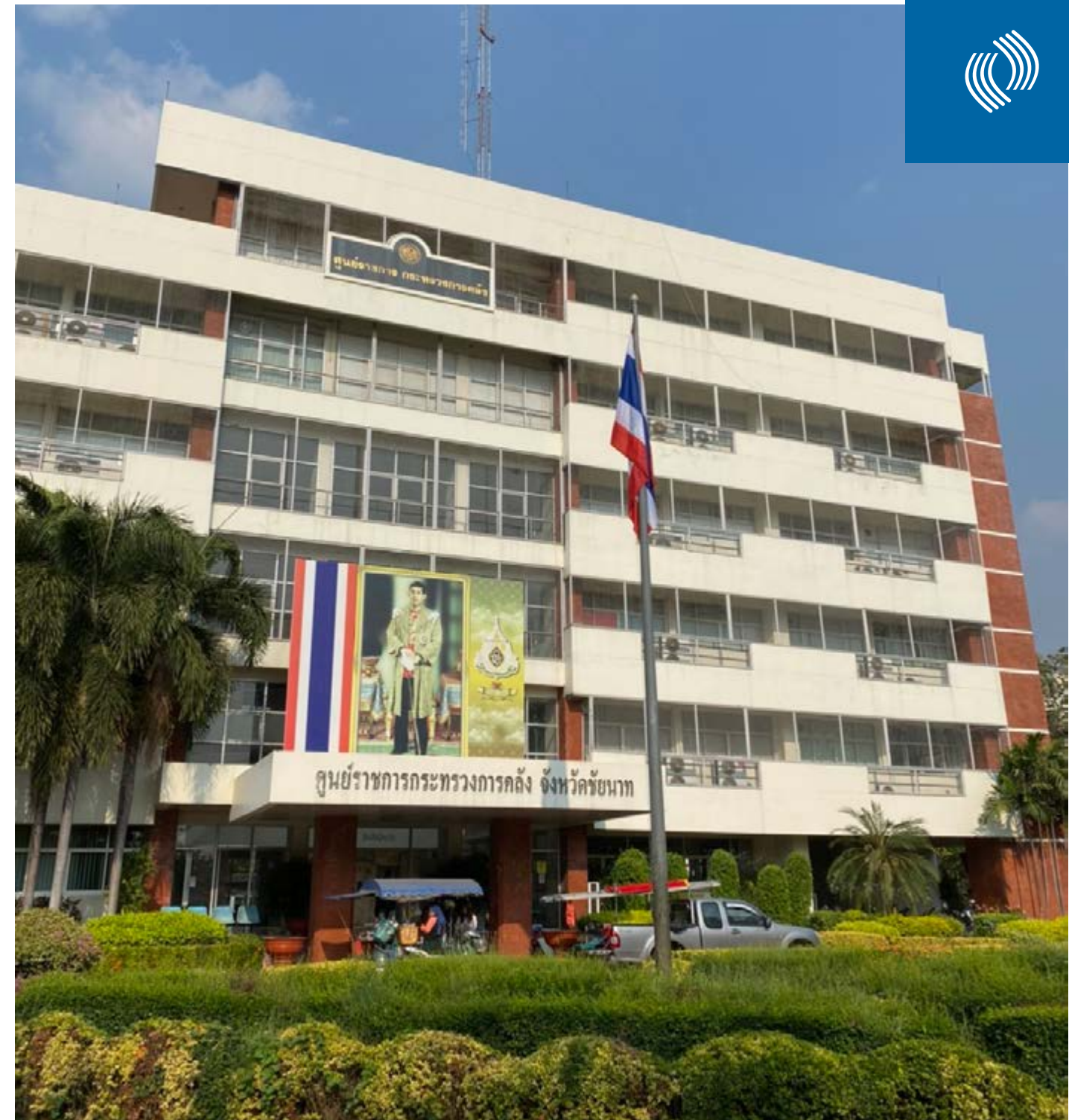
| | |
|-----------------|----------------|
| Country | Greece |
| Location | Rhodes |
| Type of product | Passenger lift |



UWS Kingswood Campus-Library

SPECIFICATIONS

| | |
|-----------------|-------------|
| Country | Australia |
| Location | Kingswood |
| Type of product | Atlas Gigas |



Ministry of Finance Office Compound

SPECIFICATIONS

| | |
|-----------------|-------------------|
| Country | Thailand |
| Location | Chainart Province |
| Type of product | Atlas RL |



American Express Stadium

SPECIFICATIONS

| | |
|-----------------|----------------|
| Country | United Kingdom |
| Location | Brighton |
| Type of product | Atlas Basic |



EmQuartier Shopping Mall

SPECIFICATIONS

| | |
|-----------------|-------------|
| Country | Thailand |
| Location | Bangkok |
| Type of product | Maison Lift |



Green Gold

SPECIFICATIONS

| | |
|-----------------|--------------------------|
| Country | Croatia |
| Location | Zagreb |
| Type of product | Atlas Basic, Atlas Gigas |



International airport

SPECIFICATIONS

| | |
|-----------------|---------------------------|
| Country | Greece |
| Location | Thessaloniki |
| Type of product | Panoramic passenger lifts |



T4 Business Centre

SPECIFICATIONS

| | |
|-----------------|---------------------------|
| Country | Russia |
| Location | St. Petersburg |
| Type of product | Panoramic passenger lifts |

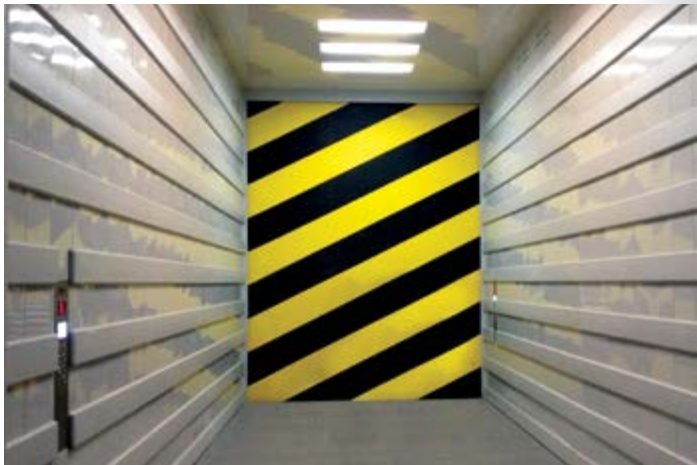
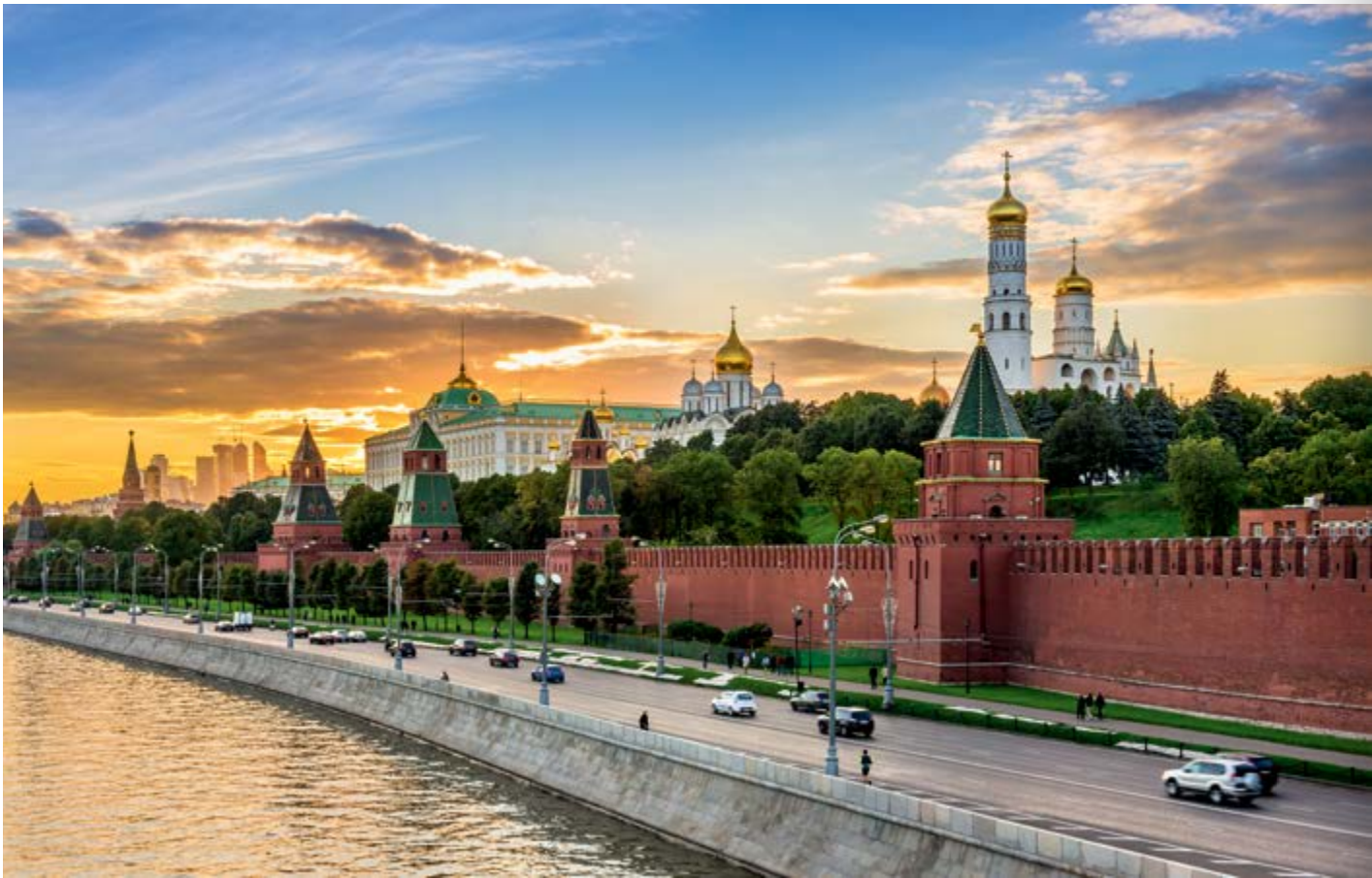


Atrium Prestige Hotel

SPECIFICATIONS

| | |
|-----------------|--------------------------|
| Country | Greece |
| Location | Rhodes |
| Type of product | Traction passenger lifts |





Palace of Congresses, Kremlin

SPECIFICATIONS

| | |
|-----------------|---|
| Country | RUSSIA |
| Location | Moscow |
| Type of product | Hydraulic freight lift(3.6m width x 8m depth x 4.7m height) |



Kleemann marine solution



▲ Ferry



▲ Luxury yacht



▲ Cruise



▲ Freighter



▲ Oil Drilling Platform



“Greg Mortimer
Aurora”

GREG MORTIMER

SPECIFICATIONS

| | |
|-----------------|--------------|
| Country | China |
| Location | Nantong |
| Type of product | Marine Lifts |



“Maran Gas
Hermès”

MARAN HERMES

SPECIFICATIONS

| | |
|------------|---------------|
| Shipyard | DMHI |
| Ship owner | Maran Gas |
| product | Crew Elevator |



Kleemann Solution System

KLEEMANN stands out for its widest product range in the world



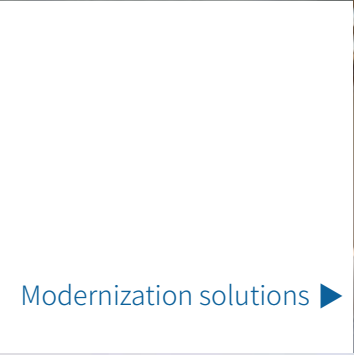
◀ Passenger Lifts



◀ Freight lifts



Escalators & moving walks ▶



Modernization solutions ▶



◀ Parking System



◀ Marine lifts

Greece KLEEMANN-Head Offices
Address: Kilkis Industrial Area , P.O. BOX
25 , 611 00 , Greece
Telephone: +30 2341 038 100
Email: headoffice@kleemannlifts.com
24/7 Support : +30 23410 38300

Serbia KLEEMANN Liftovi
Address: Obradovi a sokak 50, imanov-
ci, 22310 , Serbia
Telephone: +381 22 40 9000
Email: serbia@kleemannlifts.com
24/7 Support : +30 23410 38300

Turkey KLEEMANN Asansör
Address: Büyükbakkalköy Mahallesi
Aynur Sokak No:4, Turkey , 34858 , Tur-
key
Telephone: +90 216 570 05 00
Email: turkey@kleemannlifts.com
24/7 Support : +30 23410 38300

Russia KLEEMANN Russia
Address: Moscow Region Dzerzhinskiy,
Energetikov str., 20 , 140091 , Russia
Telephone: +7 495 283 00 01
Email: russia@kleemannlifts.com
24/7 Support : +30 23410 38300

Romania KLEEMANN Lift RO
Address: Strada Delea Nouă, nr.
38 , Etajul 2, sector 3 , 030925 , Romania
Telephone: +40 314 22 89 17
Email: romania@kleemannlifts.com
24/7 Support : +30 23410 38300

UK KLEEMANN Lifts UK
Address: Unit 8 Arena 14 , Charbridge
Lane , OX26 4SS , United Kingdom
Telephone: +44 (0) 1869 327 070
Email: uk@kleemannlifts.com
24/7 Support : +30 23410 38300

Australia KLEEMANN Australia
Address: Unit 1A, 2-6 Orion Road , LANE
COVE WEST , 2066 , Australia
Telephone: +61 2990 72066
Email: info@kleemannlifts.com.au
24/7 Support : +61 2 9907 2044

Germany KLEEMANN Aufzüge
Address: Adolf-Dembach-Str.
22A , Krefeld , 47829 , Germany
Telephone: +49 (0) 21519496030
Email: germany@kleemannlifts.com
24/7 Support : +49 (0) 173 37 39 417

France KLEEMANN Ascenseurs
Address: La Défense, Cours ValmyLe
Belvédère , 1-7 cours Valmy 92800
PUTEAUX , 92800 , France
Telephone: +33 140 90 30 55
Email: france@kleemannlifts.com
24/7 Support : +30 23410 38300

Cyprus KLEEMANN Service
Address: 17D Kyriakou Matsi, 1st Floor,
Off. 3 , 1082 , Cyprus
Telephone: +357 70 007785
Email: cyprus@kleemannlifts.com
24/7 Support : +30 23410 38300

Kleemann Lifts (China) Co. Ltd.
Address: No. 100 DengTa Road,
KSND, Jiangsu, China
Post code: 215316
Tel: +86 512 3682 3223



www.kleemannlifts.com
www.kleemannlifts.cn

While every effort has been to ensure the accuracy of the information in this brochure, KLEEMANN assumes no responsibility for omissions or typographical errors. Images are for demonstration purposes only. They are not suitable for construction/building purposes, nor feasibility studies.

Copyright © KLEEMANN 2019

